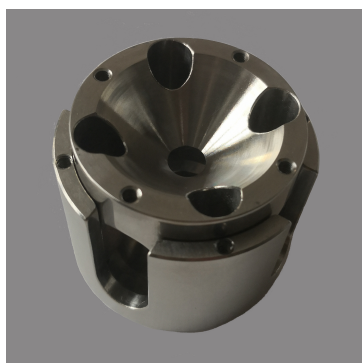




DAC Cell Wide Angle by Screws



Product Code: BX9-L00

Large open angle for one DAC with pressure-generating by screws. The cell works with a simple piston-cylinder-type with a Symmetrical conical axial opening from both sides, suitable for powder and single-crystal X-ray diffraction and also for Raman spectroscopy. The BX90-L DAC is an extremely wide conical opening on both sides of the cell.

The piston-cylinder design permit a mechanical stability under high mechanical loads, as well as simplicity, reliability, and a possibility to increase pressure which allows pressure adjusting without dismounting the cell from a holder.

The DAC loading force is produced by four screws and to make pressure control are used conical spring washers.

TECHNICAL DATA

PRESSURE DRIVER	Screws
CELL MATERIAL	Inconel steel
OPTICAL ACCESS TOP ANGLE	Total angle 90°
OPTICAL ACCESS BOTTOM ANGLE	Total angle 90°
TEMPERATURE	UP to 1000 °K
DIMENSIONS	Diameter 50mm Height 36mm

HIGHLIGHT

- Easy to align
- Good control of pressure by a couple of left and right screws
- Very wide detection angle