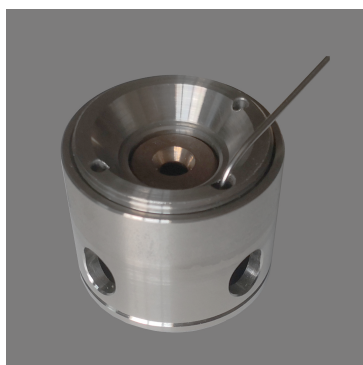




DAC Cell Wide Angle by Membrane



Product Code: BX9-HT0

It is a DAC cell with high-performance heating method using resistive heaters and a membrane driven. The heater can be mounted on the external body cell or internal around the diamonds anvil or both. If the optical access and free space allow it, it would be better to put the cell inside a vacuum chamber to prevent the oxidation. Large open angle for one DAC with pressure-generating by membrane. The cell works with a simple piston-cylinder-type with a Symmetrical conical axial opening from both sides. The piston-cylinder design permit a mechanical stability under high mechanical loads, as well as simplicity, reliability, and a possibility to increase pressure which allows pressure adjusting without dismounting the cell from a holder. The DAC loading force can be produced also by four screws eg. to indent the gasket.

TECHNICAL DATA

| | |
|-----------------------------|---------------------------|
| PRESSURE DRIVER | Membrane |
| CELL MATERIAL | Inconel steel |
| OPTICAL ACCESS TOP ANGLE | Total angle 90° |
| OPTICAL ACCESS BOTTOM ANGLE | Total angle 90° |
| ANVIL ALIGNMENT | By hemisphere |
| TEMPERATURE | UP to 1000 °K |
| DIMENSIONS | Diameter 50mm Height 36mm |

HIGHLIGHT

- Easy to align
- Good control of pressure by a couple of left and right screws
- Very wide detection angle