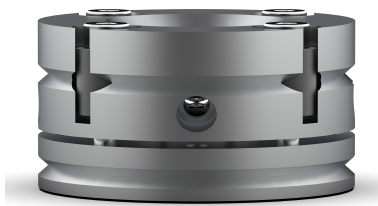




DAC SYMMETRIC CELL (open angle 90°)



Product Code: SYM-090

Diamond Anvil Cells are among the most powerful tools employed in High-Pressure research. They allow to attain static pressures up to several hundreds of kilobars by compression of small volume samples. Symmetric DACs allow the use in situ for xray investigations.

The DAC cell by screws is a direct drive pressure system which transmits force to the diamond anvil's seats to generate high pressure on the sample put in a hydrostatic volume. Pressure can be controlled by a dynamometric key that works on screws, Belleville springs permit a soft change of pressure.

TECHNICAL DATA

PRESSURE DRIVER	Screws
CELL MATERIAL	Stainless steel alloy
TOP ANGLE	Total angle max 90° on request
BOTTOM ANGLE	Total angle max 90° on request
MAX PRESSURE	up 50 GP depends of culet dimension
DIMENSIONS	Diameter 48mm Height 28mm

HIGHLIGHT

- Standard dimension to work in situ
- Lateral access